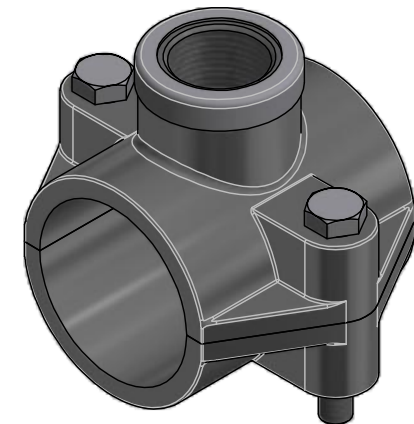


CODE	Dn	F	L fil	L1	L2	L	H1	H	Max Hole
10KPSX2512	25	1/2"	20	54,4	39	68	36,5	53	13,5
10KPSX2534	25	3/4"	20	54,4	39	68	36,5	53	13,5
10KPSX3212	32	1/2"	20	60,7	47,5	80	42	62	17,5
10KPSX3234	32	3/4"	20	60,7	47,5	80	42	62	17,5
10KPSX3210	32	1"	21	60,7	47,5	80	42	62	17,5
10KPSX4012	40	1/2"	20	66,6	60,5	87	46	71	18
10KPSX4034	40	3/4"	20	66,6	60,5	87	46	71	21,5
10KPSX4010	40	1"	21	66,6	60,5	87	46	71	25
10KPSX5012	50	1/2"	20	76	70	97,5	51	80	16
10KPSX5034	50	3/4"	20	76	70	97,5	51	80	19,5
10KPSX5010	50	1"	21	76	70	97,5	51	80	25
10KPSX50114	50	1"1/4	21	76	70	97,5	51	80	25



**EIOPRESS**

ITEM: **KPSX**  
C:\Vault\_Temp\Disegni\Schede Tecniche\Eiopress metric\Clamp saddles\EP10024.dwg

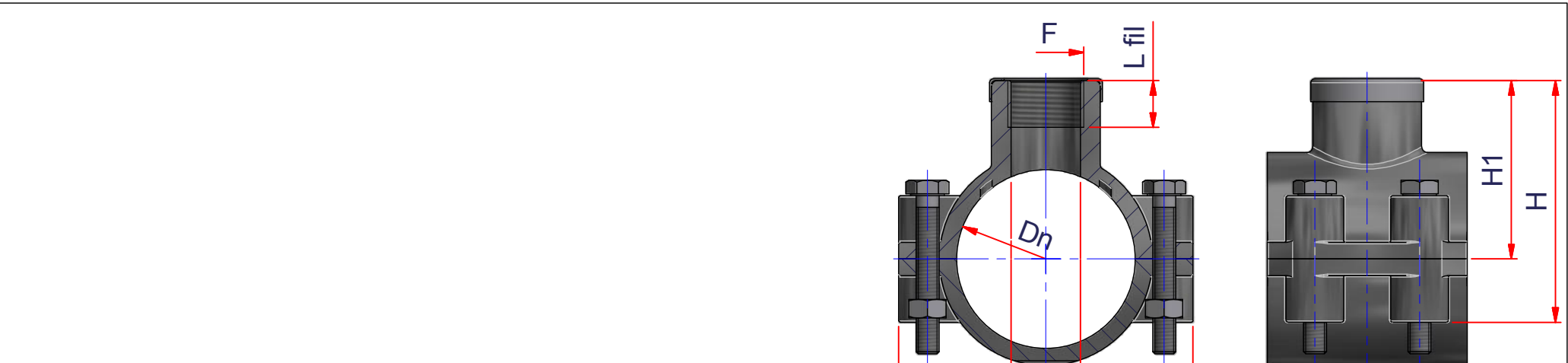
DESC: PRESA A STAFFA CON ANELLO INOX  
 CLAMP SADDLE WITH METAL  
 STIFFENING



DRAWING No:  
**EP10024**  
 SHEET OF REV.  
 1 3 -0

www.nupiindustriaitaliane.com - info@nupinet.com

All dimensions have to be considered in millimeters with 5% tolerance if not otherwise mentioned



CODE	Dn	F	L fil	L1	L2	L	H1	H	Max Hole
10KPSX6312	63	1/2"	20	82,3	69	102	56	92	17,5
10KPSX6334	63	3/4"	20	82,3	69	102	56	92	23,5
10KPSX6310	63	1"	21	82,3	69	102	56	93	29
10KPSX63114	63	1"1/4	21	82,3	69	102	59	94	29
10KPSX63112	63	1"1/2	25	82,3	69	102	63	99	33
10KPSX7512	75	1/2"	20	95,5	79,5	116	64	105	16
10KPSX7534	75	3/4"	20	95,5	79,5	116	64	105	19,5
10KPSX7510	75	1"	21	95,5	79,5	116	64	105	25,5
10KPSX75114	75	1"1/4	21	95,5	79,5	116	64	105	29
10KPSX75112	75	1"1/2	25	95,5	79,5	116	69	111	34
10KPSX7520	75	2"	26	95,5	79,5	116	69	111	47
10KPSX9012	90	1/2"	20	110,7	90	134	71	120	16
10KPSX9034	90	3/4"	20	110,7	90	134	71	120	19,5
10KPSX9010	90	1"	21	110,7	90	134	71	120	25,5
10KPSX90114	90	1"1/4	21	110,7	90	134	71	120	29
10KPSX90112	90	1"1/2	25	110,7	90	134	77	126	34
10KPSX9020	90	2"	26	110,7	90	134	77	126	47



**EIOPRESS**

ITEM: **KPSX**  
C:\Vault\_Templ\Disegni\Schede Tecniche\Eiopress metric\Clamp saddles\EP10024.dwg

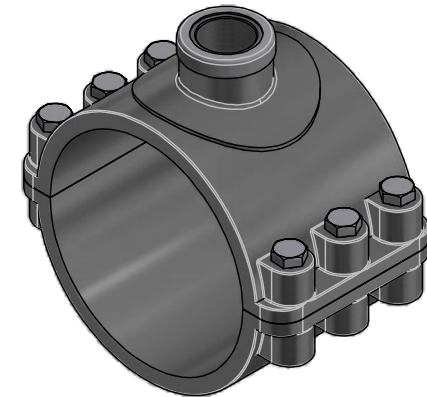
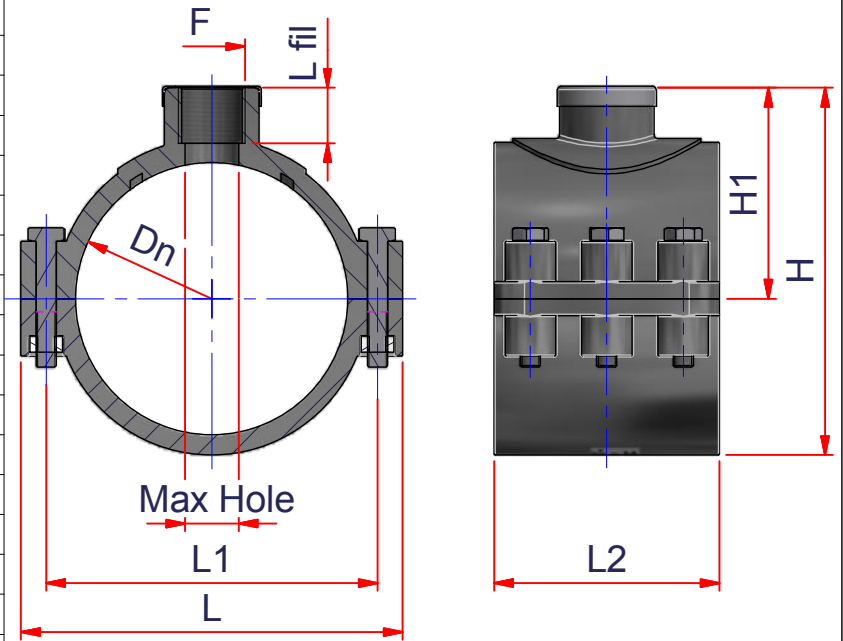
DESC: PRESA A STAFFA CON ANELLO INOX  
 CLAMP SADDLE WITH METAL  
 STIFFENING



DRAWING No:  
**EP10024**  
 SHEET OF 2 3 REV. -0

www.nupiindustriaitaliane.com - info@nupinet.com All dimensions have to be considered in millimeters with 5% tolerance if not otherwise mentioned

CODE	Dn	F	L fil	L1	L2	L	H1	H	Max Hole
10KPSX11012	110	1/2"	22	131,5	90	151,5	85	146	15
10KPSX11034	110	3/4"	22	131,5	90	151,5	85	146	21,5
10KPSX1101	110	1"	22,5	131,5	90	151,5	84,5	146	24,5
10KPSX110114	110	1"1/4	21	131,5	90	151,5	82,5	146	34
10KPSX110112	110	1"1/2	29	131,5	90	151,5	93,5	146	48
10KPSX1102	110	2"	22	131,5	90	151,5	84,5	152	48
10KPSX12512	125	1/2"	22	157,4	111,5	178	91,5	159	15
10KPSX12534	125	3/4"	22	157,4	111,5	178	90	159	19,5
10KPSX1251	125	1"	22,5	157,4	111,5	178	91,5	159	25,5
10KPSX125114	125	1"1/4	24	157,4	111,5	178	91,5	159	32
10KPSX125112	125	1"1/2	29	157,4	111,5	178	96,5	159	39
10KPSX1252	125	2"	29	157,4	111,5	178	96,5	165	48
10KPSX125212	125	2"1/2	31,5	157,4	111,5	178	100	165	63,5
10KPSX14012	140	1/2"	22	166	127	191,5	102	178	14,5
10KPSX14034	140	3/4"	20	166	127	191,5	100	176	19,5
10KPSX1401	140	1"	22,5	166	127	191,5	101	176	25,5
10KPSX140114	140	1"1/4	24	166	127	191,5	103	179	32
10KPSX140112	140	1"1/2	25	166	127	191,5	103	179	39
10KPSX1402	140	2"	29	166	127	191,5	110	185	48
10KPSX140212	140	2"1/2	31,5	166	127	191,5	110	185	63,5
10KPSX1403	140	3"	34,5	166	127	191,5	113,5	189	70
10KPSX16012	160	1/2"	22	190	127	210,5	110	196	14,5
10KPSX16034	160	3/4"	22	190	127	210,5	110	196	19,5
10KPSX1601	160	1"	22,5	190	127	210,5	110	196	25,5
10KPSX160114	160	1"1/4	24	190	127	210,5	110	196	32
10KPSX160112	160	1"1/2	25	190	127	210,5	110	196	39
10KPSX1602	160	2"	29	190	127	210,5	115	201	48
10KPSX160212	160	2"1/2	31,5	190	127	210,5	119	205	63,5
10KPSX1603	160	3"	34,5	190	127	210,5	122	208	69



**EIOPRESS**

ITEM: **KPSX**  
C:\Vault\_Temp\Disegni\Schede Tecniche\Eiopress metric\Clamp saddles\EP10024.dwg

DESC: PRESA A STAFFA CON ANELLO INOX  
 CLAMP SADDLE WITH METAL  
 STIFFENING



DRAWING No:  
**EP10024**  
 SHEET OF 3 3 REV. -0

www.nupiindustriaitaliane.com - info@nupinet.com

All dimensions have to be considered in millimeters with 5% tolerance if not otherwise mentioned