

/ Impiego

La nostra gamma di raccorderia viene lavorata da barra d'ottone CW617N e CW614N, seguendo scrupolosamente ogni fase del processo produttivo.

Ogni singolo particolare è prodotto nel rispetto delle normative internazionali* a garanzia della qualità "Made in Italy".

*UNI EN ISO 1254-3:2000 e EN ISO 9001 :2008.

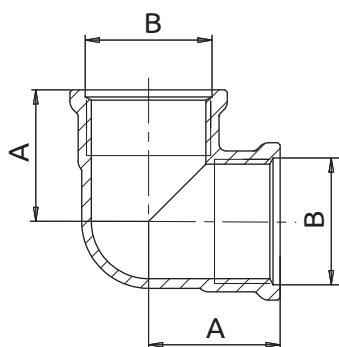
/ Materiali

Raccordi stampati: Ottone CW617N - UNI 12165

Raccordi torniti: Ottone CW617N - UNI 12165

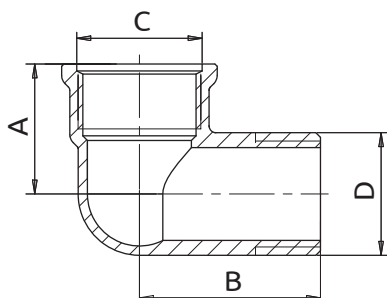
Guarnizioni: EPDM Perossidico

/ Art. 1200 - Raccordo curvo F-F



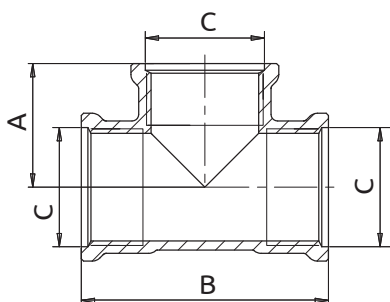
Codice Giallo	Codice Nichelato	Codice Cromato	A	B
811200AD05	811200AD06	811200AD07	25	1/2" F
811200AE05	811200AE06	811200AE07	28	3/4" F
811200AF05	811200AF06	811200AF07	34,5	1" F
811200AG05	811200AG06	-	42	1" 1/4 F
811200AH05	811200AH06	-	45	1" 1/2 F
811200AJ05	811200AJ06	-	51	2" F

/ Art. 1201 - Raccordo curvo M-F



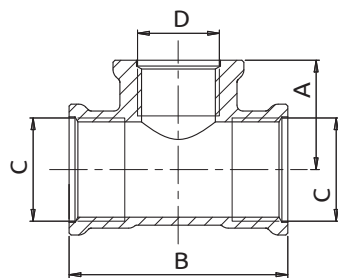
Codice Giallo	Codice Nichelato	Codice Cromato	A	B	C	D
811201AD05	811201AD06	811201AD07	25	36	1/2" F	1/2" M
811201AE05	811201AE06	811201AE07	28	39	3/4" F	3/4" M
811201AF05	811201AF06	811201AF07	34,5	47	1" F	1" M
811201AG05	811201AG06	-	42	50	1" 1/4 F	1" 1/4 M
811201AH05	811201AH06	-	45	58	1" 1/2 F	1" 1/2 M
811201AJ05	811201AJ06	-	51	65	2" F	2" M

/ Art. 1202 - Raccordo TEE femmina



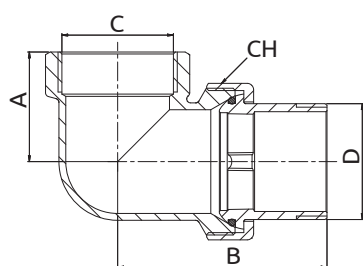
Codice Giallo	Codice Nichelato	Codice Cromato	A	B	C
811202AD05	811202AD06	811202AD07	25	36	1/2" F
811202AE05	811202AE06	811202AE07	28	39	3/4" F
811202AF05	811202AF06	811202AF07	34,5	47	1" F
811202AG05	811202AG06	-	42	50	1" 1/4 F
811202AH05	811202AH06	-	45	58	1" 1/2 F
811202AJ05	811202AJ06	-	51	65	2" F

Art. 1203 - Raccordo TEE femmina ridotto



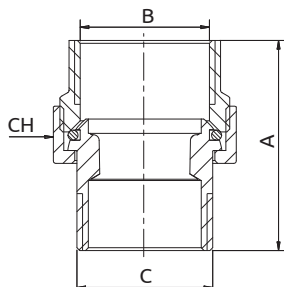
Codice Giallo	Codice Nichelato	A	B	C	D
811203ADACAD05	811203ADACAD06	25	50	1/2" F	3/8"
811203AEADAE05	811203AEADAE06	28	56	3/4" F	1/2"
811203AFAEAF05	811203AFAEAF06	34,5	69	1" F	3/4"

Art. 808 - Raccordo curvo 3 pezzi. Bocchettone con tenuta O-ring



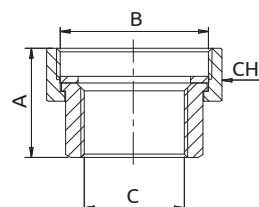
Codice Giallo	Codice Nichelato	A	B	C	D	CH
85808AC05	85808AC06	23	50	3/8" F	3/8" M	27
85808AD05	85808AD06	25	54	1/2" F	1/2" M	30
85808AE05	85808AE06	28	58	3/4" F	3/4" M	37
85808AF05	85808AF06	34,5	62	1" F	1" M	46
85808AG05	85808AG06	42	66	1" 1/4 F	1" 1/4 M	53
85808AH05	85808AH06	45	70	1" 1/2 F	1" 1/2 M	53
85808AJ05	85808AJ06	51	74	2" F	2" M	80

Art. 818 - Raccordo diritto 3 pezzi. Bocchettone con tenuta O-ring



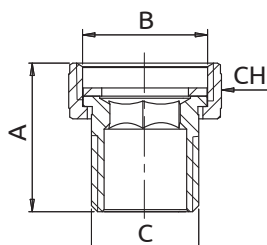
Codice Giallo	Codice Nichelato	A	B	C	CH
85818AC05	85818AC06	32	3/8" F	3/8" M	27
85818AD05	85818AD06	36	1/2" F	1/2" M	30
85818AE05	85818AE06	40	3/4" F	3/4" M	37
85818AF05	85818AF06	44	1" F	1" M	46
85818AG05	85818AG06	48	1" 1/4 F	1" 1/4 M	53
85818AH05	85818AH06	52	1" 1/2 F	1" 1/2 M	53
85818AJ05	85818AJ06	56	2" F	2" M	80

Art. 789 - Bocchettone sede piana F-F



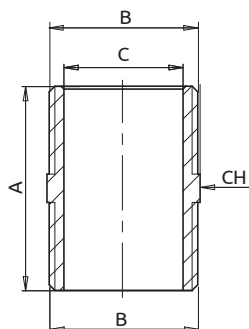
Codice	A	B	C	CH
82789AD05	27	1" F	1/2" F	30
82789AE05	30	1" 1/2 F	3/4" F	37
82789AF05	33	1" 1/2 F	1" F	46

Art. 792 - Bocchettone sede piana M-F



Codice	A	B	C	CH
82792AD05	36	3/4" F	1/2" M	30
82792AE05	40	1" F	3/4" M	37
82792AF05	44	1" 1/4 F	1" M	46
82792AG05	48	1" 1/2 F	1" 1/4 M	53

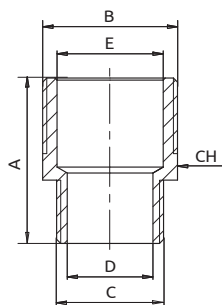
/ Art. 1210 - Raccordo nipples



Codice Giallo	Codice Nichelato	Codice Cromato	A	B	C	CH
811210AC05	811210AC06	811210AC07	24	3/8" M	12	17
811210AD05	811210AD06	811210AD07	26	1/2" M	15	21
811210AD05L*	811210AD06L*	811210AD07L*	33	1/2" M	15	21
811210AE05	811210AE06	811210AE07	36	3/4" M	21	27
811210AF05	811210AF06	811210AF07	43,5	1" M	26	33
811210AG05	811210AG06	-	43,5	1" 1/4 M	34	42
811210AH05	811210AH06	-	44,5	1" 1/2 M	39	48
811210AJ05	811210AJ06	-	45	2" M	51	60

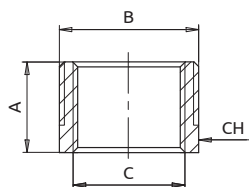
*Versione prolungata

/ Art. 1211 - Raccordo nipples ridotto



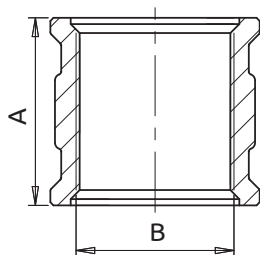
Codice Giallo	Codice Nichelato	Codice Cromato	A	B	C	D	E	CH
811211ACAD05	811211ACAD06	811211ACAD07	25,5	1/2" M	3/8" M	12	15	21
811211ADAE05	811211ADAE06	811211ADAE07	31	3/4" M	1/2" M	15	21	27
811211ADAF05	811211ADAF06	811211ADAF07	35,5	1" M	1/2" M	15	26	33
811211AEAF05	811211AEAF06	811211AEAF07	40,5	1" M	3/4" M	21	26	33
811211AEAG05	811211AEAG06	-	41	1" 1/4 M	3/4" M	21	34	42
811211AFAG05	811211AFAG06	-	44	1" 1/4 M	1" M	26	34	42
811211AFAH05	811211AFAH06	-	44,5	1" 1/2 M	1" M	26	39	48
811211AGAH05	811211AGAH06	-	44,5	1" 1/2 M	1" 1/4 M	34	39	48
811211AHAJ05	811211AHAJ06	-	45	2" M	1" 1/2 M	39	51	60

/ Art. 1212 - Raccordo nipples ridotto



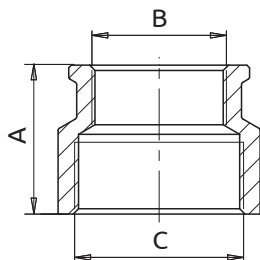
Codice Giallo	Codice Nichelato	Codice Cromato	A	B	C	CH
811212ACAD05	811212ACAD06	811212ADAC07	17	1/2" M	3/8" F	21
811212ACAE05	811212ACAE06	811212AEAC07	17	3/4" M	3/8" F	27
811212ACAF05	811212ACAF06	811212AFAC07	17	1" M	3/8" F	33
811212ADAE05	811212ADAE06	811212AEAD07	23,5	3/4" M	1/2" F	27
811212ADAF05	811212ADAF06	811212AFAD07	23,5	1" M	1/2" F	33
811212ADAG05	811212ADAG06	-	23,5	1" 1/4 M	1/2" F	42
811212ADAH05	811212ADAH06	-	23,5	1" 1/2 M	1/2" F	48
811212ADAJ05	811212ADAJ06	-	23,5	2" M	1/2" F	60
811212AEAF05	811212AEAF06	811212AFAE07	23,5	1" M	3/4" F	33
811212AEAG05	811212AEAG06	-	25,5	1" 1/4 M	3/4" F	42
811212AEAH05	811212AEAH06	-	23,5	1" 1/2 M	3/4" F	48
811212AEAJ05	811212AEAJ06	-	23,5	2" M	3/4" F	60
811212AFAG05	811212AFAG06	-	23,5	1" 1/4 M	1" F	42
811212AFAH05	811212AFAH06	-	23,5	1" 1/2 M	1" F	48
811212AFAJ05	811212AFAJ06	-	23,5	2" M	1" F	60
811212AGAH05	811212AGAH06	-	23,5	1" 1/2 M	1" 1/4 F	48
811212AGAJ05	811212AGAJ06	-	25,5	2" M	1" 1/4 F	60
811212AHAJ05	811212AHAJ06	-	24	2" M	1" 1/2 F	60
811212AHAK05	811212AHAK06	-	25	2" 1/2 M	1" 1/2 F	77
811212AJAK05	811212AJAK06	-	26	2" 1/2 M	2" F	77

Art. 1213 - Manicotto femmina



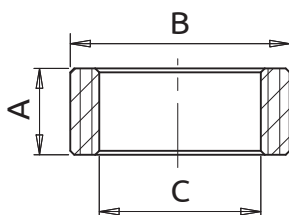
Codice Giallo	Codice Nichelato	Codice Cromato	A	B
811213AC05	811213AC06	811213AC07	25	3/8" F
811213AD05	811213AD06	811213AD07	27	1/2" F
811213AE05	811213AE06	811213AE07	30	3/4" F
811213AF05	811213AF06	811213AF07	32	1" F
811213AG05	811213AG06	-	38	1"1/4 F
811213AH05	811213AH06	-	40	1"1/2 F
811213AJ05	811213AJ06	-	44	2" F

Art. 1214 - Manicotto F-F



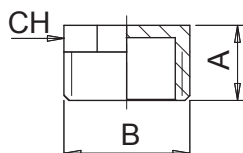
Codice Giallo	Codice Nichelato	Codice Cromato	A	B	C
811214ACAD05	811214ACAD06	811214ACAD07	22,5	3/8" F	1/2" F
811214ADAE05	811214ADAE06	811214ADAE07	25	1/2" F	3/4" F
811214ADAF05	811214ADAF06	811214ADAF07	29,5	1/2" F	1" F
811214AEAF05	811214AEAF06	811214AEAF07	28	3/4" F	1" F
811214AEAG05	811214AEAG06	-	30	3/4" F	1" 1/4 F
811214AFAG05	811214AFAG06	-	31	1" F	1" 1/4 F
811214AFAH05	811214AFAH06	-	33	1" F	1" 1/2 F
811214AFAJ05	811214AFAJ06	-	35	1" F	2" F
811214AGAH05	811214AGAH06	-	30,5	1" 1/4 F	1" 1/2 F
811214AGAJ05	811214AGAJ06	-	33,5	1" 1/4 F	2" F
811214AHAJ05	811214AHAJ06	-	32	1"1/2 F	2" F

Art. 1215 - Ghiera riduzione M-F



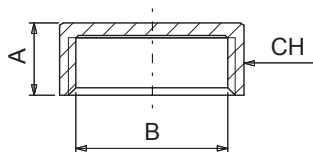
Codice	A	B	C
811215ADAC05	10	1/2" M	3/8" F
811215AEAD05	10	1/2" M	1/2" F
811215AFAD05	13	1" M	3/4" F
811215AFAE05	13	1" M	1" F
811215AGAF05	13	1" 1/4 M	1" 1/4 F
811215AHAF05	15	1" 1/2 M	1" 1/2 F

Art. 237 - Tappo di testa cieco femmina



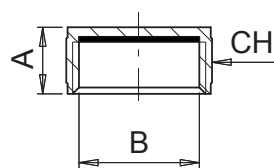
Codice Giallo	Codice Nichelato	A	B	CH
87237AD05	87237AD06	22	1/2"	21
87237AE05	87237AE06	22	3/4"	33
87237AF05	87237AF06	22	1"	42

/ Art. 201 - Tappo di testa cieco femmina



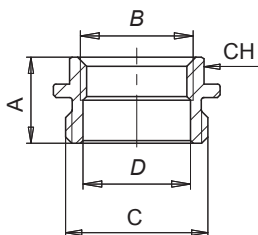
Codice Giallo	Codice Nichelato	A	B	CH
87201AD05	87201AD06	10,5	1/2"	21
87201AE05	87201AE06	14,5	3/4"	27
87201AF05	87201AF06	14,5	1"	33
87201AG05	87201AG06	14,5	1" 1/4	42

/ Art. 238 - Tappo di testa cieco femmina con guarnizione



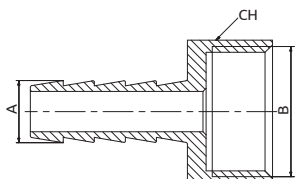
Codice Giallo	Codice Nichelato	A	B	CH
87238AC05	87238AC06	10,5	3/8"	17
87238AD05	87238AD06	10,5	1/2"	21
87238OO05	87238OO06	10,5	24x1,5	27
87238AE05	87238AE06	10,5	3/4"	27

/ Art. 236 - Tappo di testa forato con guarnizione



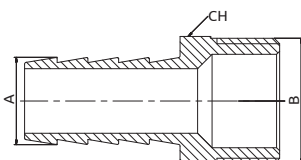
Codice Giallo	Codice Nichelato	A	B	C	D	CH
87236LB05	87236LB06	14,5	3/8" F	3/4" M	20	25
87236LC05	87236LC06	14,5	1/2" F	3/4" M	20	25
87236LD05	87236LD06	14,5	3/8" F	1" M	26	25
87236LE05	87236LE06	14,5	1/2" F	1" M	26	25
87236LF05	87236LF06	14,5	3/4" F	1" M	26	38

/ Art. 521 - Portagomma Femmina



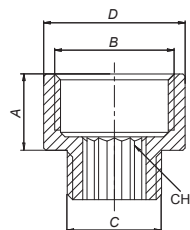
Codice	A	B
81521BCAD05	10	1/2 F
81521BEAD05	14,5	1/2 F

/ Art. 522 - Portagomma Maschio



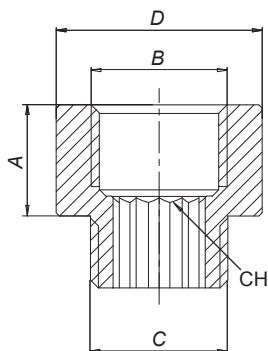
Codice	A	B
81522BCAD05	10	1/2 M
81522BEAD05	14,5	1/2 M

/ Art. 20 - Prolunga M-F ridotta



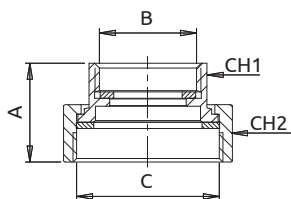
Codice Giallo	Codice Cromato	A	B	C	D	CH
81020ACAD05	81020ACAD06	26	1/2" F	3/8" M	25,5	10
81020ADAE05	81020ADAE06	28	3/4" F	1/2" M	31,5	12
81020AEAF05	81020AEAF06	30	1" F	3/4" M	37,8	18

/ Art. 19 - Prolunga M-F



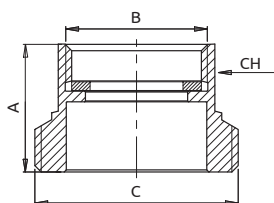
Codice Giallo	Codice Cromato	A	B	C	D	CH
81019AC01005	81019AC01006	10	3/8" F	3/8" M	21,5	12
81019AC01505	81019AC01506	15	3/8" F	3/8" M	21,5	12
81019AC02005	81019AC02006	20	3/8" F	3/8" M	21,5	12
81019AC03005	81019AC03006	30	3/8" F	3/8" M	21,5	12
81019AC04005	81019AC04006	40	3/8" F	3/8" M	21,5	12
81019AC05005	81019AC05006	50	3/8" F	3/8" M	21,5	12
81019AC06005	81019AC06006	60	3/8" F	3/8" M	21,5	12
81019AC08005	81019AC08006	80	3/8" F	3/8" M	21,5	12
81019AC10005	81019AC10006	100	3/8" F	3/8" M	21,5	12
81019AD01005	81019AD01006	10	1/2" F	1/2" M	25,9	13
81019AD01505	81019AD01506	15	1/2" F	1/2" M	25,9	13
81019AD02005	81019AD02006	20	1/2" F	1/2" M	25,9	13
81019AD02505	81019AD02506	25	1/2" F	1/2" M	25,9	13
81019AD03005	81019AD03006	30	1/2" F	1/2" M	25,9	13
81019AD04005	81019AD04006	40	1/2" F	1/2" M	25,9	13
81019AD05005	81019AD05006	50	1/2" F	1/2" M	25,9	13
81019AD06005	81019AD06006	60	1/2" F	1/2" M	25,9	13
81019AD07005	81019AD07006	70	1/2" F	1/2" M	25,9	13
81019AD08005	81019AD08006	80	1/2" F	1/2" M	25,9	13
81019AD10005	81019AD10006	10	1/2" F	1/2" M	25,9	13
81019AE01005	81019AE01006	10	3/4" F	3/4" M	31,6	17
81019AE01505	81019AE01506	15	3/4" F	3/4" M	31,6	17
81019AE02005	81019AE02006	20	3/4" F	3/4" M	31,6	17
81019AE02505	81019AE02506	25	3/4" F	3/4" M	31,6	17
81019AE03005	81019AE03006	30	3/4" F	3/4" M	31,6	17
81019AE04005	81019AE04006	40	3/4" F	3/4" M	31,6	17
81019AE05005	81019AE05006	50	3/4" F	3/4" M	31,6	17
81019AE06005	81019AE06006	60	3/4" F	3/4" M	31,6	17
81019AE08005	81019AE08006	80	3/4" F	3/4" M	31,6	17
81019AE10005	81019AE10006	100	3/4" F	3/4" M	31,6	17
81019AF01005	81019AF01006	10	1" F	1" M	38	17
81019AF01505	81019AF01506	15	1" F	1" M	38	17
81019AF02005	81019AF02006	20	1" F	1" M	38	17
81019AF03005	81019AF03006	30	1" F	1" M	38	17
81019AF04005	81019AF04006	40	1" F	1" M	38	17
81019AF05005	81019AF05006	50	1" F	1" M	38	17
81019AF08005	81019AF08006	80	1" F	1" M	38	17
81019AF10005	81019AF10006	100	1" F	1" M	38	17

/ Art. 796 - Bocchettone per attacco pompa



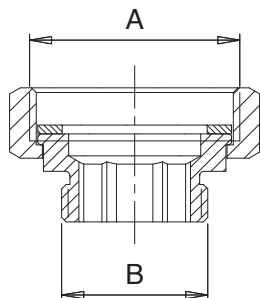
Codice	A	B	C	CH1	CH2
82796AF05	31	1" F	1" 1/2	37	53

/ Art. 797 - Raccordo Maschio-Femmina con guarnizioni



Codice	A	B	C	CH
82797AF05	16,5	1" f	1" 1/2 M	37

/ Art. 798 - Raccordo Maschio-Femmina con calotta girevole



Codice	A	B	CH
82798AF05	1"1/2 F	1" M	37