

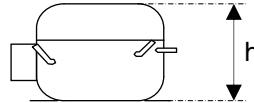
OPERATION:

Application:	L.B.P.	Max. Ambient Temp:	43°C
Refrigerant:	R600a	(1) Max. Steady Discharge Temp:	120°C
Operation:	Capillary	(1,2) Max. Peak Discharge Temp:	135°C
Cooling:	Static	Max. Steady Condensing Temp:	60°C
		(2) Max. Peak Condensing Temp:	70°C
		Max. Winding Temp:	130°C
		Max. Impurities:	30 mg
		Max.Total Compressor Water Content:	100 mg

COMPRESSOR:

Displacement:	8.1 cc	Oil Type:	Mineral
Bore:	25.40 mm	(4) Viscosity:	7 cst
Stroke:	16.01 mm	Suction Muffler:	Semi-direct

(3) Net Wt:	7.6 kg
Case Size:	h = 159,0 mm
Oil Charge:	170 cc



ELECTRICAL:

Power Supply:	220 - 240V	Motor Type:	RSIR
Voltage Limits:	187 - 264V	Locked Rotor Current:	12.8 / 4.6 A**
Frequency:	50 Hz		
Phase:	1 ph		

Main Winding Resistance at 25°C:	29.5 Ω
Start Winding Resistance at 25°C:	18.6 Ω

** Maximum current / Measured after 4 seconds

(1) Measured 5cm. from the shell with insulated thermocouples

(2) For transient conditions during 'Pull Down'

(3) Net weight is with oil but without electrics

(4) Measured at 40°C



ELECTRICAL COMPONENTS:

Starting Device: K 100-xx

PTC Resistance: 14 Ω

PROTECTORS:

PROTECTORS	BDG ¾	WANBAO	SENSATA 4TM
Type	AE 18 FU x	B62 110 xx	4TM 222 NFBYY xx
Open $^{\circ}\text{C}$	115 - 125 $^{\circ}\text{C}$	105 - 115 $^{\circ}\text{C}$	115 - 125 $^{\circ}\text{C}$
Close $^{\circ}\text{C}$	71 - 53 $^{\circ}\text{C}$	70 - 52 $^{\circ}\text{C}$	70 - 52 $^{\circ}\text{C}$
U.T.C	1.70 A 70 $^{\circ}\text{C}$	1.58 A 70 $^{\circ}\text{C}$	1.62 A 70 $^{\circ}\text{C}$
Time Check Current	6.35 A	6.2 A	6.7 A (5-15s)
Max. Current	14.0 A	13.0 A	15.0 A (2s max.)
Code (if any)	F5	M3	6C



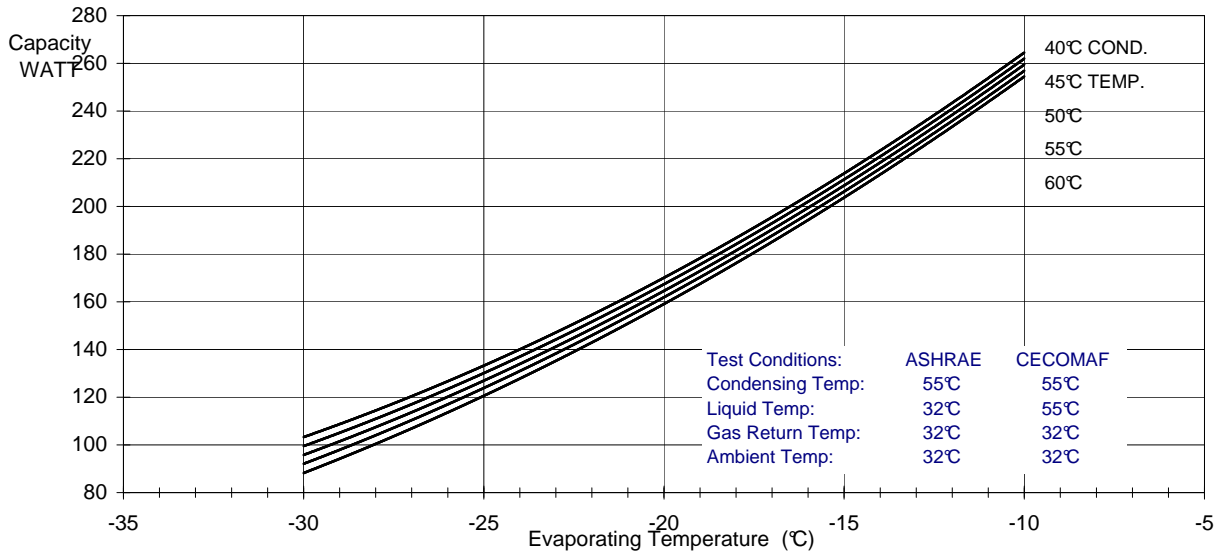
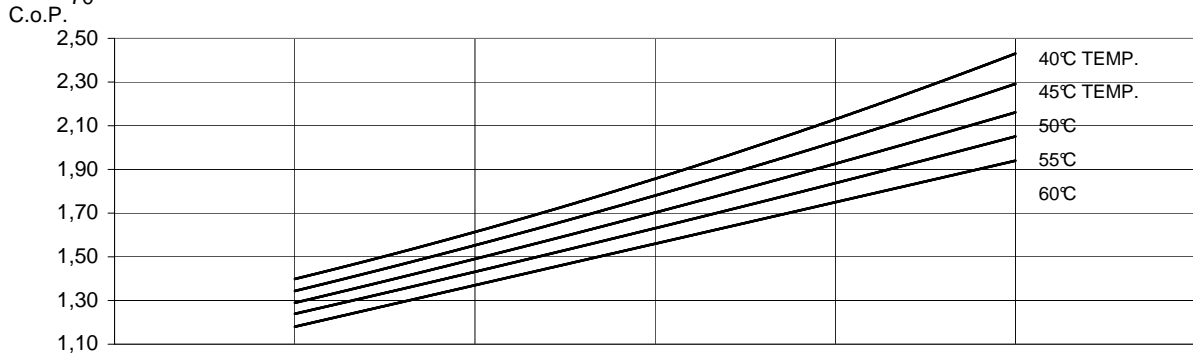
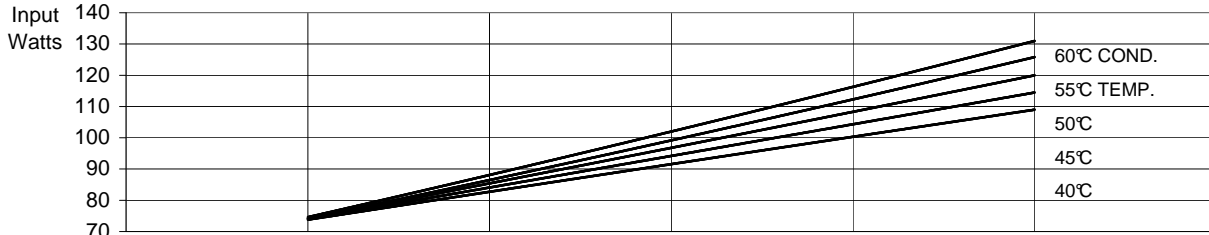
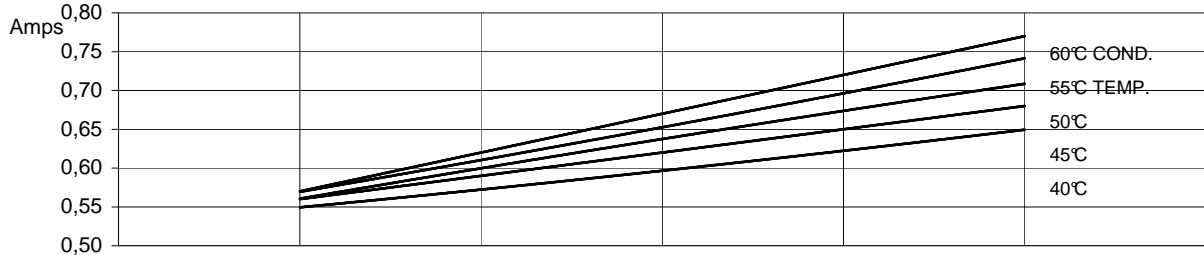
HMK80AA

PRODUCT SPECIFICATION

PERFORMANCE:

(Graphs are at ASHRAE conditions)

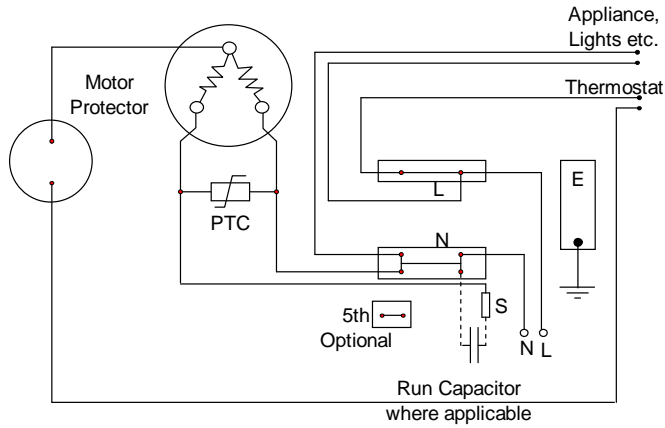
220V 50Hz



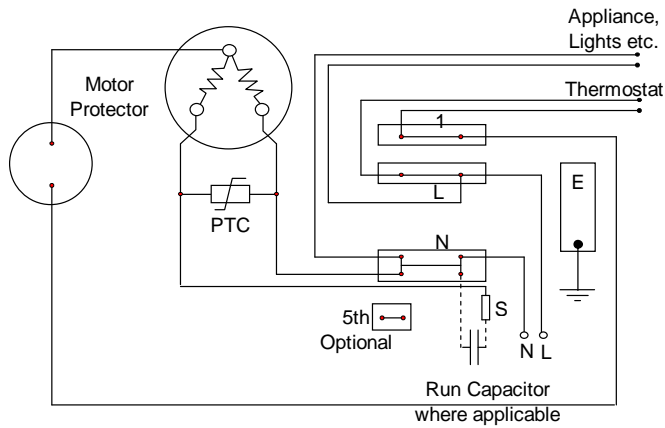
Test Conditions: ASHRAE CECOMAF
 Condensing Temp: 55°C 55°C
 Liquid Temp: 32°C 55°C
 Gas Return Temp: 32°C 32°C
 Ambient Temp: 32°C 32°C

	Evaporating Temperature °C	-30	-25	-23,3	-20	-15	-10	
ASHRAE:	Capacity	W	92	124	136	162	206	257
	C.o.P.	W / W	1,24	1,43	1,50	1,63	1,84	2,05
CECOMAF:	Capacity	W	76	102	133	170	211	
	C.o.P.	W / W	1,03	1,18	1,34	1,51	1,67	
	Input Power	W	74	87	91	99	112	126
	Current	A	0,57	0,61	0,62	0,65	0,70	0,74

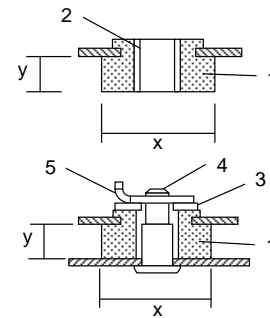
Circuit Diagram for Terminal Board Standard Version



Circuit Diagram for Terminal Board Frontal Version



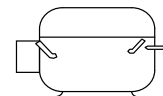
Mounting Accessories



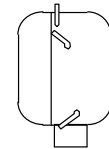
x = 26mm or 28.5mm
y = 9mm or 10.3mm
Other sizes available

1. Rubber grommet
2. Sleeve
3. Washer
4. Steel pin
5. Clip

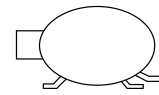
Recommended Transport Positions when fitted into appliances



Upright



Electrics Down



Tubes Down

Compressor Label

